

Technical Data Sheet



Ultra Jet DLE-LV

UV-LED-curable inkjet ink, particularly suited for printers with low-viscosity piezo printheads and a temperature-controlled ink supply.



Key features

- Optimized for digital printing with low-viscosity piezo printheads and a temperature-controlled ink supply
- High-quality pigmentation for long-term outdoor applications
- Good adhesion on many flexible and rigid substrates
- Available in 1 l bottles
- Manufactured without the use of TPO

Field of application

Substrates

The Ultra Jet DLE-LV substrate range includes:

Rigid substrates:

- Acrylic glass (PMMA)
- Rigid PVC and PVC rigid foam sheets
- Aluminum composite panels (e. g. Dibond®)
- Polycarbonate
- Coated metal

Flexible substrates:

- Soft PVC tarpaulin material
- Self-adhesive films
- Polycarbonate films
- Paper
- Backlit
- Printable textiles such as Trevira®, artificial leather

Compatible print heads

Ultra Jet DLE-LV is suitable for the following print heads:

- Epson i3200-U1 (with temperature-controlled ink supply at 40-45 °C)
- Kyocera KJ4A-0300

Ink properties

Curing

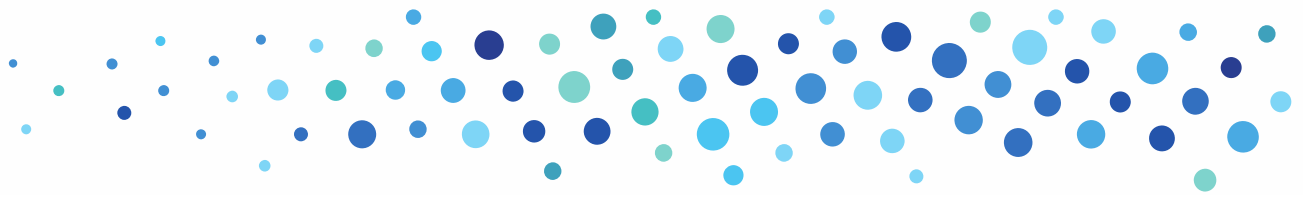
UV-LED-curable ink with excellent reactivity at a wavelength of 395 nm. Maximum adhesion and chemical resistance are achieved after 24 hours.

The curing process depends on several factors:

- Design of the curing unit (e. g. reflectors)
- Number, age, and performance of the LED lamps
- Processing speed
- Substrate and its distance from the LED lamps
- Color shade and ink deposit

Lightfastness

Pigments of high fade resistance are used which enable a 2-year vertical outdoor exposure, referred to the middle European climate and suitable substrates.



Range

Basic Shades

- 170 White
- 428 Yellow
- 438 Magenta
- 459 Cyan
- 489 Black
- 910 Varnish
- 434* Light Magenta
- 455* Light Cyan

*available on request

Auxiliaries

- DI-UR Cleaner
- DI-UR 3 Cleaner
- P 2 Primer

DI-UR / DI-UR 3: are used for rinsing/cleaning or short-term soaking of printheads and other ink-carrying components (e. g. after extended machine downtime) and are chemically adjusted to the ink formulation.

Thanks to its higher viscosity, **DI-UR 3** is especially suited for printers with automatic cleaning units.

P 2: designed for manual precleaning and pretreatment of polypropylene and metals. Improves adhesion on powder-coated surfaces.

Shelf life

The shelf life for an unopened ink container if stored in a dark room at a temperature of 15-25 °C is:

- 1 year for all inks

The ambient temperature may fall below this value only once for max. 2-3 days. Under different conditions, particularly other storage temperatures, the shelf life will be reduced. In such cases, the warranty given by Marabu expires.

Change-over

Switch & Swap / flushing required:

Before switching to Ultra Jet DLE-LV, fully drain the ink system and flush all ink-carrying components with DI-UR cleaner.

Please note: When switching from a third-party supplier, an additional cleaning step should be carried out using the third-party supplier's cleaner, followed by cleaning with DI-UR. Replacing the filters (dampers) is generally recommended, as well as checking whether any further spare parts need to be replaced.

Switch & Match / Profiling necessary for maximum color accuracy.

Recommendation

For smooth production, always follow the guidelines provided by Marabu and the machine manufacturer. We recommend replacing ink filters annually and performing regular maintenance and service intervals.

Labeling

For Ultra Jet DLE-LV and its auxiliaries, there are current Material Safety Data Sheets available according to EC regulation 1907/2006, informing in detail about all relevant safety data including labeling according to EC regulation 1272/2008 (CLP regulation). Such health and safety data may also be derived from the respective label.

Safety rules for UV-LED inks

UV-LED inks contain substances which may irritate the skin. Therefore, take utmost care when working with UV-LED-curable printing inks. Contaminated skin areas must be cleaned immediately with water and soap. Please follow the instructions on the labels and in the safety data sheets.





Note

All statements made here refer exclusively to standard color shades. For custom inks, the described features may deviate. For comprehensive legal information regarding the use of our products, please refer to our General Terms and Conditions (GTC) at www.marabu.com.

In the event of any queries, please contact:

Technical Hotline

Phone: +49 7141 691140

technical.hotline@marabu.com

Marabu GmbH & Co. KG | www.marabu.com

Version 01 - 04/2026

