



# MARABU

## PRODUCT PRESENTATION

Printing Inks and  
Liquid Coatings



Hall B5/E28



## LOW-MIGRATION SCREEN PRINTING INK

### Innovative product for PE/PP plastic food packaging



Inks for food packaging are subject to strict quality audits to verify they are not susceptible to migration. Marabu's new **Ultra Pack UVFP** range is the first and only ink system on the market that has been tested and approved (by the independent Swiss-based SQTS institute) for the migration-critical PE/PP plastics most commonly used for food packaging.

#### Ultra Pack UVFP:

- Carefully chosen, high-purity raw materials: product complies with the EuPIA Suitability List of Photo-Initiators for Low Migration UV Printing Inks and Varnishes, Part 1A, and the stringent Nestlé Guidance Note on Packaging Inks
- Easy to use in the production process
- Brilliant, high-gloss colors
- Excellent adhesion and resistance
- Rapid drying for very high reactivity
- Printing speeds of up to 5,000 items per hour

## PERFECT SOLUTION FOR CREDIT CARDS



### All advantages of UV technology



**Ultra Card UVCC** is a UV-curable screen printing ink for printing onto coated or uncoated PVC and PLA films (PLA = Polylactide, „bioplastic“). It is excellently suited for laminating or embossing, and can be combined with other printing processes. It is made for the decoration of single-layer or multi-layer identity cards such as bank or credit cards, store cards, club cards, or ID system cards.

#### Ultra Card UVCC:

- All advantages of UV technology: no residual solvents in the ink film, unlimited mesh opening, excellent detail reproduction, fast curing
- Excellent laminating properties
- Metallic Mixing System: for any number of metallic hues
- Very good flexo and offset overprintability
- Ideal flow properties: homogeneous surface

## A WORLD FIRST: **Mara® Tech MGO**

### A single-component ink for glass and metal



What was once an unattainable goal is now a reality: a single-component yet extremely resistant ink for screen and pad printing both glass and metal substrates. **Mara® Tech MGO** is ideal for glass materials (flat and container glass) and for metals where very high resistance to chemicals and mechanical stress is crucial.

#### Applications:

- Glass used in restaurants, for personal-care products and furniture
- Sensitive products, particularly baby bottles
- 3C devices (touch panels)
- Metals, e.g. stainless steel panels and trim

#### Benefits:

- Single-component baking ink for glass and metal materials
- Cost-effective: no pot life, no waste ink
- Easy to process and user-friendly
- Outstanding performance in terms of adhesion and chemical resistance
- Suitable for sensitive products such as babies' bottles: free of bisphenol A (BPA)
- Attractive appearance: high opacity, and brilliant, high-gloss colours

## **Mara® Glass MGLA**

### New screen-printing ink for touchscreens and panels (second surface)



Marabu offers UV-curable and solvent-based inks for printing on glass touchscreens and touchpads. Moreover, the company has developed the new two-component **Mara® Glass MGLA** for printing on second surfaces, i.e. on the back of the substrate. It can also be employed for outdoor applications, including door intercoms, ticket vending machines, streetlight management systems (e.g. at airports or in pedestrian zones), and boat control systems. Additionally, this ink system is suitable for lamination.

#### Benefits of **Mara® Glass MGLA**:

- The black shades possess low conductivity, i.e. high electrical resistance
- Silicone-free
- High-gloss appearance
- High opacity
- Excellent weather and chemical resistance
- Suitable for lamination

## SPECIAL INK FOR FRONT PANELS

The ideal solution for challenging direct printing and second surface applications



The specialty **Mara® Panel MPA** inks make it possible to create practically any decorative pattern or markings on household appliances:

- Unbeatable high-opacity white
- Deep, non-conductive black developed especially for printing the back (second surface) of popular PMMA and PC materials
- Very high electrical resistance: no interference with appliance operation
- Mild labelling: user-friendly during processing
- Resistance to water vapor and popular cleaning agents from leading manufacturers
- Suitable for the entire appliance even if individual components are made of plastic, metal or glass

## SMART INKS FOR THE AUTOMOTIVE INDUSTRY

For a high-class look-and-feel in vehicle interiors

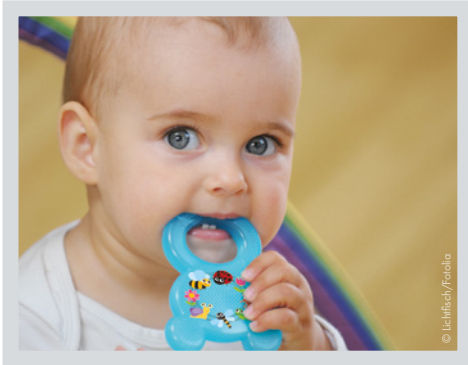


Matte aluminum trim or glossy logo badges for car interiors are first printed, then embossed, punched and molded. These operations pose significant chemical and mechanical challenges – for which Marabu's specially developed screen printing inks are just perfect:

- **Mara® Poly P:** perfectly suited for interior or exterior components like trim parts, door sill trim, or emblems
- **Mara® Pur PU:** for aluminum components, can be combined with Mara® Poly P
- **Mara® Cure HY:** dual-cure screen print varnish for high-gloss or matte surface effects
- **Mara® Mold MPC:** suitable for plastic components made by film insert molding (FIM), with excellent adhesion to injection-molded materials and high mechanical resistance

## INK SYSTEM FOR DIVERSE APPLICATIONS

### Tampa® Tex TPX – opens up entirely new possibilities for pad printing



Marabu's **Tampa® Tex TPX** is not just suitable for printing T-shirts and footwear elements, it also ideal for other sensitive products – such as baby bottles, baby pacifiers, toys, and packaging for personal care products and foodstuff.

#### Tampa® Tex TPX:

- Excellent adhesion and flexible ink film for end-user comfort
- High opacity on colored and dark materials
- Highly resistant to washing and ironing
- Complies with the strict specifications of major clothing brands (Adidas A01 and Nike RSL) and of baby product, toy and packaging manufacturers

### Tampa® Sport TPSP is suitable for decorating durable fabrics



New high-tech materials for sports and outdoor clothing must be extremely flexible and hard-wearing. We have expanded our portfolio of inks for textiles to include a new product specifically for these applications:

#### Tampa® Sport TPSP:

- Highly flexible ink film
- Good opacity
- Highly resistant to washing and ironing
- Excellent adhesion

## VISION WATER

### A world's first: Water-based pad printing ink



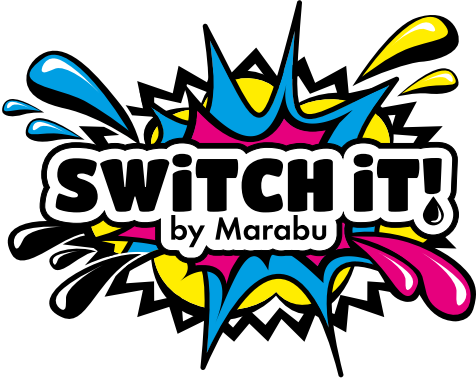
At Fespa, Marabu presents the world's first water-based pad printing ink available on the market. The new ink system is a further development of the existing water-based spray and brush inks **Maqua Coat** and **Maqua Color** and was also developed for decorating sensitive applications such as toys.

#### Water-based pad printing ink:

- Odourless and environmentally friendly
- Low PAH and VOC values
- Excellent results in terms of adhesion, opacity and resistance
- Substrates: wood, ABS and pre-treated polypropylene (PP)
- Protection for users and consumers

## SWITCH IT!

### The real alternative to OEM digital inks



Marabu presents at Fespa its successful Switch It! concept, which offers a real alternative to OEM printing ink.

Simply replace the original ink of your printer by one of Marabu's digital printing inks and benefit from many advantages:

- Development and production of Marabu digital printing inks under the same strict tolerances as OEM printing inks (Made in Germany)
- Straightforward compatibility (available in all common refill systems such as cartridges, bags, bottles)
- High quality and improved performance with simultaneous reduction of production costs
- Professional support and assistance from our team of application engineers

For further information please talk to our booth staff or contact us at [digitalsales@marabu.com](mailto:digitalsales@marabu.com)

## Mara® Jet DI-TV

### New solution for the Roland TrueVIS printer range



The new solvent-based **Mara® Jet DI-TV** ink was specially developed for use in all Roland® TrueVIS Print & Cut devices, and is suitable for all printers that can employ the TrueVIS ink configuration. Consequently, it is an attractively priced alternative to OEM inks.

Moreover, making the switch to Marabu's product requires no modifications to chips or hardware. **Mara® Jet DI-TV** delivers vibrant hues, a broad color gamut, and exceptional durability, making it a superb choice for any graphical application.

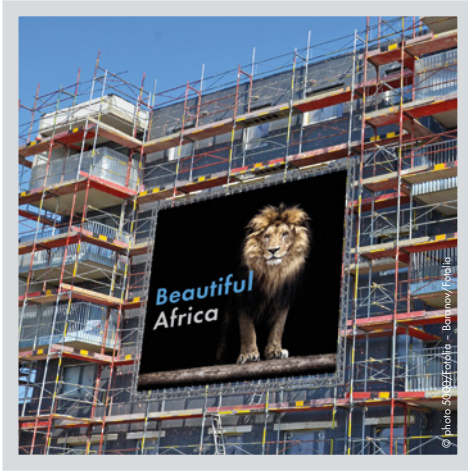
#### The ink is suitable for all popular substrates, including:

- Adhesive PVC film
- Banners
- Backlit films
- Roll-ups

Users can be sure of maintenance-friendliness and seamless compatibility with printers and all components.

## EXPANDED PORTFOLIO OF DIGITAL PRINTING INKS

### UV-curable inkjet products for all leading printer heads



Marabu has extended its UV-curable offering to include two new ink ranges:

- **Ultra Jet DUV-MF:** highly flexible ink for wide-format graphical application
- **Ultra Jet LED-MF:** LED-curable version of DUV-MF featuring all advantages of LED-curing



Our established ink product ranges:

- **Ultra Jet DUV-POP:** specialty ink for indoor and outdoor POP/POS applications
- **Ultra Jet DUV-A:** highly versatile wide-format ink
- **Ultra Jet DUV-C:** direct printing of glass or PET containers, and flat glass
- **Ultra Jet DUV-GR:** an alternative option for Océ Arizona printers
- **Ultra Jet DLE-A:** LED-curable all-round ink

## „COLD-PEEL“ – DIGITAL TRANSFER PRINTING FOR TEXTILES

### Texa® Jet DX-DTE combines advantages of both screen and digital printing



The cold-peel process for digital transfer printing has advantages that conventional screen transfer printing cannot match. For instance, it can be deployed for a large variety of fabric types. The new **Texa® Jet DX-DTE** digital printing ink based on pigmented resin boasts all the major advantages of transfer technology. The image is printed using the CMYK process onto a specially coated film, without the need for complex prepress work. Screen printing is only required for the white blocking layer. The final patches are produced by means of a heat press.

#### Advantages of the method:

- Finest details and patterns can be transferred
- No weeding necessary
- When deployed on the Mutoh Value Jet 628, cost-effective and efficient small and mid-size production runs are possible
- Good washing resistance is guaranteed
- Best method to create high-resolution images in bright colours

## CLEARSHIELD® LIQUID COATINGS

Performance, Variety, Flexibility



Clear coatings, also called liquid laminates, are an inexpensive way to protect billboards, prints, fine art, signs, banners, awnings, wall coverings, canvas prints, vehicle graphics, and other products. **ClearShield®** water-based liquid laminates offer the same protections as film laminates.

### ClearShield® Liquid Coatings:

- Saving of as much as 60% in production costs
- UV-protection
- Chemical resistance
- Abrasion resistance and flexibility
- Specifically formulated for a variety of inks, application methods (manually with a short nap roller or HVLP spray-gun or automated via a liquid laminator such as Marabu's StarLam 1600R)
- Ensure maximum protection for applications such as banners, wall coverings, canvas prints and vehicle graphics

## STARLAM® 1600R ROLL-TO-ROLL LIQUID LAMINATOR

Perfect equipment for your liquid coating application



The StarLam® 1600R Roll-to-Roll Liquid Laminator applies a smooth, consistent coating of Marabu's water-based liquid coatings, making protecting your digital prints a quick and simple process. The StarLam® handles a variety of substrates up to 64" wide and when paired with one of the various ClearShield formulations, you will find the perfect coating solution for your application. This single operator machines' double filtration system needs only periodic attention, making it perfect for a shop's storefront or high production areas.

To get more information please visit us at [www.marabu-northamerica.com](http://www.marabu-northamerica.com) or contact us at [contact-mna@marabu.com](mailto:contact-mna@marabu.com).



### Marabu GmbH & Co. KG

Asperger Strasse 4  
71732 Tamm  
Germany  
Phone: +49 7141 691 0  
[info@marabu-inks.com](mailto:info@marabu-inks.com)  
[www.marabu-inks.com](http://www.marabu-inks.com)

### Subsidiaries:

**France** [info-fr@marabu.com](mailto:info-fr@marabu.com) **Spain** [info-es@marabu.com](mailto:info-es@marabu.com) **Italy** [info-it@marabu.com](mailto:info-it@marabu.com)  
**Great Britain** [sales-UK@marabu.com](mailto:sales-UK@marabu.com) **The Netherlands/Belgium** [info@marabu.nl](mailto:info@marabu.nl)  
**Sweden** [info@marabu.se](mailto:info@marabu.se) **Denmark** [info@marabu.dk](mailto:info@marabu.dk) **Norway** [info@marabu.no](mailto:info@marabu.no)  
**Finland** [info@marabu.fi](mailto:info@marabu.fi) **Russia** [m-ritz@marabu.com](mailto:m-ritz@marabu.com) **Canada** [Orders-MCA@marabu.com](mailto:Orders-MCA@marabu.com)  
**USA** [contact-mna@marabu.com](mailto:contact-mna@marabu.com) **Brazil** [info@marabu.com.br](mailto:info@marabu.com.br) **Paraguay** [idc@marabu.com.py](mailto:idc@marabu.com.py)  
**China** [chinainfo@marabu.com](mailto:chinainfo@marabu.com)