

G-WASH 112 provides automatic screen
decoating based on the latest
PLUG & STRIP technology



G-WASH 112

Grünig

Grünig-Interscreen AG
Ringgenmatt 14
CH-3150 Schwarzenburg
Switzerland

Phone +41 31 734 2600
Fax +41 31 734 2601
www.grunig.ch
mail@grunig.ch

G-WASH 112

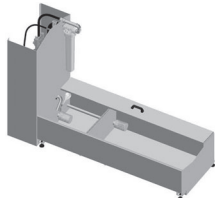
Automatic screen decoating machine



Touch-Screen Terminal



Option H



Recycled water tank



Drive unit and spray carriage



Nozzle

Particular characteristics:

- **“PLUG & STRIP”** construction method: Unwrapping, setting-up, filling, decoating.
- New machine concept in 4 standard sizes: Standard height: H1400 mm Standard widths: W1000, 1250, 1500 und 1800 mm One machine = 2 processes:
- **Automatic decoating and degreasing.**
- TOP quality at a very competitive price, guaranteeing low operating costs.
- Rugged construction of stainless steel V2A.
- Safe work procedures thanks to the closed high-pressure chamber.
- Place-saving and compact front loader construction with sliding door.
- Powerful high-pressure pump for fast and excellent decoating results.
- Easy operation by means of Touch-Screen
- Grünig special nozzles made from V2A with service cover for maximum ease of cleaning.
- Simple and rugged screen supports.
- Low-maintenance, maximum user convenience.

Programs

- 50 programs that can be freely programmed according to the customer's requirements.
- The individual process steps, the desired pressure, the type of chemicals and all the exposure times, washing moves and spray carriage speed can be individually programmed.

Closed circuit water system

- The integrated 2-chamber closed circuit water system reduces the water consumption and hence the waste water quantity by up to 90%. The process water goes through a sedimentation process and then passes through a coarse and fine filter before being re-used as recycled water.
- For every process, the operator can choose between recycled and clean water.
- The closed circuit water system considerably lowers the operating costs.

Option C2

- Second chemical product (degreasing)

Option F

- Connection for external inclined filter

Option H

- High-pressure hand-held lance for manual tasks.

Option V1

- Equipment for connecting the machine to a ventilation system provided by customers

Option V2

- Exhaust air ventilator for evacuating the water vapors at the program end + after door opening

Option V3

- Aerosol filter removing the smallest water droplets from the exhaust air

Option W

- Floor trough made of stainless steel V2A

Option Z1

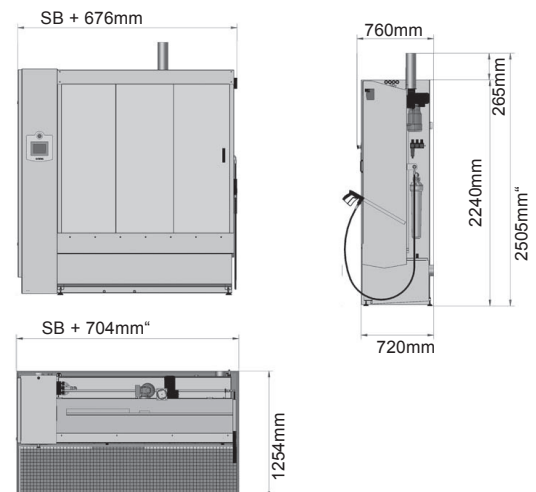
- Additional screen fastening for adjacent double loading

Option Z2

- Additional screen fastening for double super-imposed loading



Screen format	SB Screen width	mm	1000,1250,1500,1800
	SH Screen height	mm	1400
	Frame profile thickness	mm	20 - 40
Sizes	Width	mm	SB + 676
	Height	mm	2240
	Depth	mm	720
Connection value	Voltage	V	3 x 400+N+PE
		V	3 x 220+PE
	Frequency	Hz	50/60
Pneumatic supply	Pressure	Bar	6
	Consumption	m ³ /h	3
Water consumption	Pressure	Bar	3
		l/min	20
Permanent sound pressure level		dB (A)	< 85



All measures in mm



The machine is in compliance with the EU machinery directives (CE-conformity).

Technical changes are reserved

November 14